

Vehicle Probe Project Web Conference



Status Update

April 14, 2011



Call Courtesies

- Please give your name and agency before asking your question (at least the first time)
- Please keep your phone muted until asking a question or speaking (press *6 to mute/unmute individual phone lines)
- Please do not place call “on hold” as your hold music may be heard by the group
- Please press *0 to speak to an operator for questions regarding audio
- Please call 610-662-5569 for difficulties with the web application

Agenda

Topic		Speaker
1	Introductions and Welcome	George Schoener
2	Review of Action Items from previous webcasts	Karen Jehanian
3	Communications Update	Karen Jehanian
4	INRIX Update	Rick Schuman
5	Data Validation	Stan Young
6	Contract Issues and Year 19 Update	Kathy Frankle
7	Long Distance Trip Planner	Karen Jehanian
8	Vehicle Probe Project Suite (Performance Measures Tool)	Michael VanDaniker
9	Agency Questions and Updates	All
10	Participation in Meetings/Conferences	Karen Jehanian
11	Review of Action Items from this call	Karen Jehanian
12	Selection of Date for Next Webcast	All

Introductions and Welcome

George Schoener
I-95 Corridor Coalition

Review of Action Items from previous webcasts

Karen Jehanian

Review of Action Items

from previous VP Webcasts

#	Responsible Party	Action Items	Due Date	Status
February 23, 2011 – VP Project Team Webcast				
1	VPP Management Team	Prepare a one-page fact sheet regarding the contract costs (based on the extension)	14apr11	Ongoing
2	VPP Management Team	Send email to member agencies requesting a prominent link to the Long Distance Trip Planner website. Information will also include the current placement and the ease/difficulty of locating existing links.	14apr11	Complete
3	INRIX	Distribute protocol addressing notification of a real-time data service disruption to agencies participating in the Vehicle Probe Project.	14apr11	Complete - will be discussed in presentation
4	VPP Management Team	Provide an update on the status of the Performance Measures Tool developed by the University of Maryland CATT Lab	14apr11	Complete - will be discussed in presentation

Communications Update

Karen Jehanian

- Coalition Website Postings/
Correspondence

Project Team Correspondence

Coalition Website Postings		
DOCUMENT	DATE POSTED	LOCATION ON WEBSITE
Travel Information Service Program Track Committee Meeting – Agenda, Presentations, Bios and Minutes	April 1, 2011	On the TISPTC Page under “Latest Meeting Minutes”
Arterial Data Validation White Paper (dated November 2010)	March 30, 2011	On the Highlights page under “Data Validation”
February 23, 2011 VP Team Webcast – Presentation and Meeting Minutes	March 23, 2011	On the Highlights page under “Project Presentations”
Correspondence Sent to the VPP Team		
DOCUMENT	DATE SENT	METHOD
February 23, 2011 VP Team Webcast – Presentation and Meeting Minutes	March 23, 2011	Via email

INRIX Update

Rick Schuman
INRIX

- Project Statistics
- Other Topics
 - Map Update Summary
 - INRIX Customer Communications Plan

Project Statistics

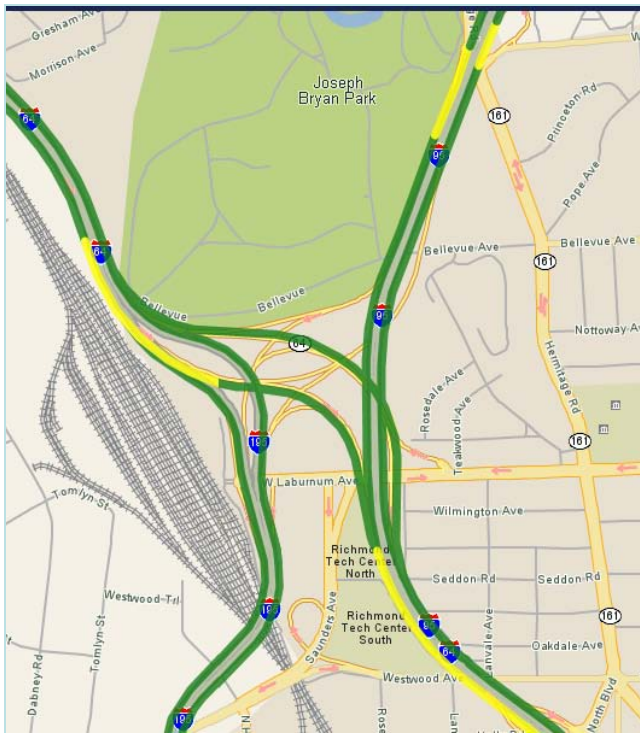
- Availability
 - 99.60% in February 2011
 - 100% in March 2011
 - 99% contract requirement
 - 99.88% in 2009; 99.94% in 2010; 99.87% YTD in 2011
- Users (as of 4/7/11)
 - Monitoring Site – 429
 - Data Feed – 42
 - Archive requests – 579 since launch

Map Update Status

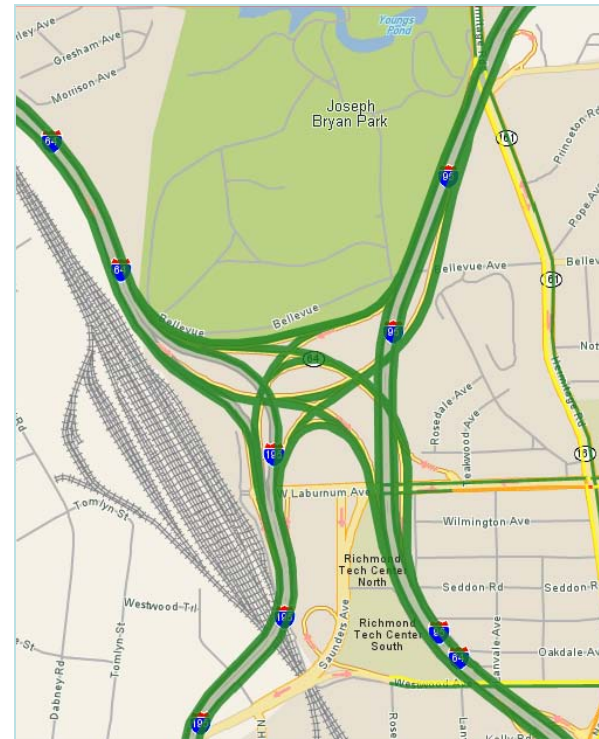
- Map Update completed March 29-30, 2011
 - Map: From Sept 2009 to Sept 2010
 - TMC: From version 3.6 to version 3.7
 - System down for 4:16 (10:18pm through 2:34am (EDT))
 - Scheduled maintenance per contract requirements
- Major impact – enables many more ramps to be added with July 1 coverage expansion
- Next Update – preliminarily planned for late 2011

Example Interchange (I-95/I-64/I-195 in Richmond)

Current

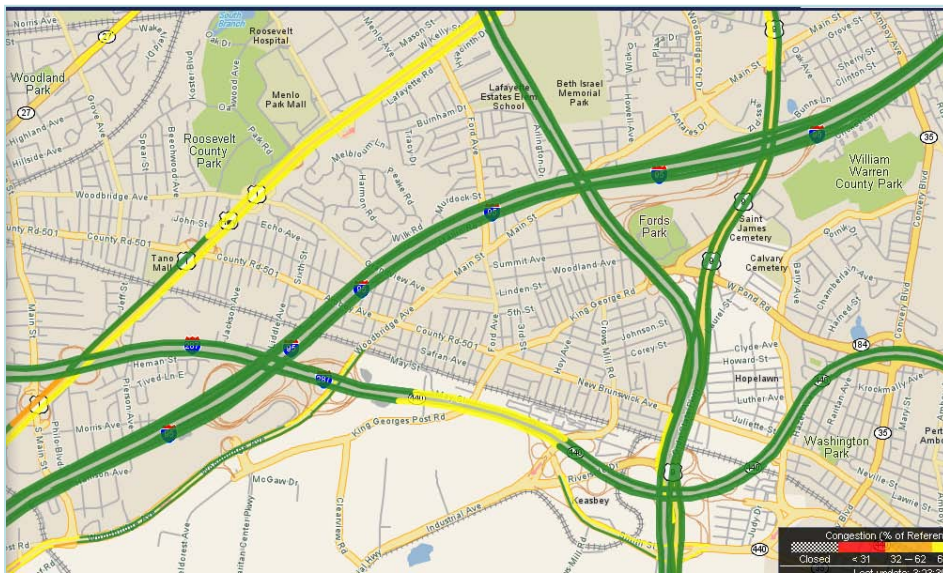


Future

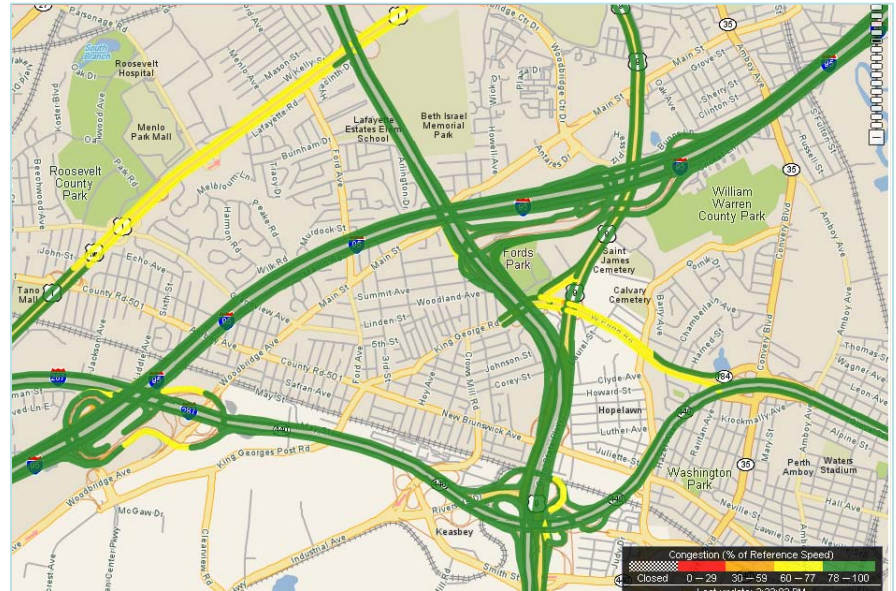


Example Interchange (I-95/GSP/I-287/US-9 in NJ)

Current



Future



INRIX Customer Communications Plan (page 1 of 3)

INRIX – Monitoring and Testing:

- **I-95 Historical Archive**
 - Manually tested once per day
 - If archive is unavailable or inconsistent , INRIX will provide notice within 24 hours (at most).
- **Connected services platform (includes all APIs)**
 - Monitored 24 hours per day
 - If the system becomes unavailable and an issue is found to be impacting customers, INRIX will send an email notifying users and then send out a follow-on communication once service levels have been restored.

INRIX Customer Communications Plan (page 2 of 3)

INRIX will notify I-95 Corridor Coalition member states and associated agencies as noted:

- **Planned Service Disruption**
 - at least two weeks prior to the event
- **Changes to Map Data or TMC Set**
 - at least a 30 day advance notice.
- **Unplanned Service Disruption (for INRIX APIs, INRIX historical archives, and the for the I-95 monitoring site)**
 - Once a system anomaly or outage is confirmed INRIX will notify our customers via email if services are unavailable.

INRIX Customer Communications Plan (page 3 of 3)

INRIX currently maintains a list of email addresses (**I-95 customer communication distribution**) for maintenance notifications.

- To add a recipient to the notification list please send email, from an agency address, to TAM@inrix.com.
- If you currently receive updates from INRIX for such events no action is needed.
- For new recipients requiring notification/communication, please send requests to TAM@inrix.com.

A one-page summary will be included with the meeting minutes and sent out via the VPP listserv.

Data Validation

Stan Young
University of Maryland

- Status and Schedule
- Improvement in Real-Time Data:
Score Analysis

Data Validation Status

Month and Year	State	Ground Truth Data Collection [By mid-month]	Data Processed and Preliminary Results Ready for Review [By end of Month]	UMD Review	INRIX Review	State Review & Briefing [+ 2 weeks]	Publish [+ 2 weeks]
				[+ 2 weeks]			
Feb-11	SC	<i>Feb 1 - Feb 15, 2011</i>	<i>15-Mar-11</i>	<i>10-Apr-11</i>	<i>10-Apr-11</i>	26-Apr-11	10-May-11
Mar-11	NC	<i>1-Mar-11</i>	10-Apr-11	24-Apr-11	24-Apr-11	10-May-11	24-May-11
Apr-11	NJ	4/1/2011	1-May-11	15-May-11	15-May-11	31-May-11	14-Jun-11
May-11	NJ	5/1/2011	1-Jun-11	15-Jun-11	15-Jun-11	1-Jul-11	15-Jul-11
Jun-11	PA	6/1/2011	1-Jul-11	15-Jul-11	15-Jul-11	31-Jul-11	14-Aug-11

- **Dec 2010 - Jan 2011:** No data collection
- **Feb 2011:** South Carolina – Report in Draft
 - Only 10 hours of congested data
- **Mar 2011:** North Carolina – Data collected in Charlotte
- **April 2011:** New Jersey – Targeting ramps to Lincoln Tunnel

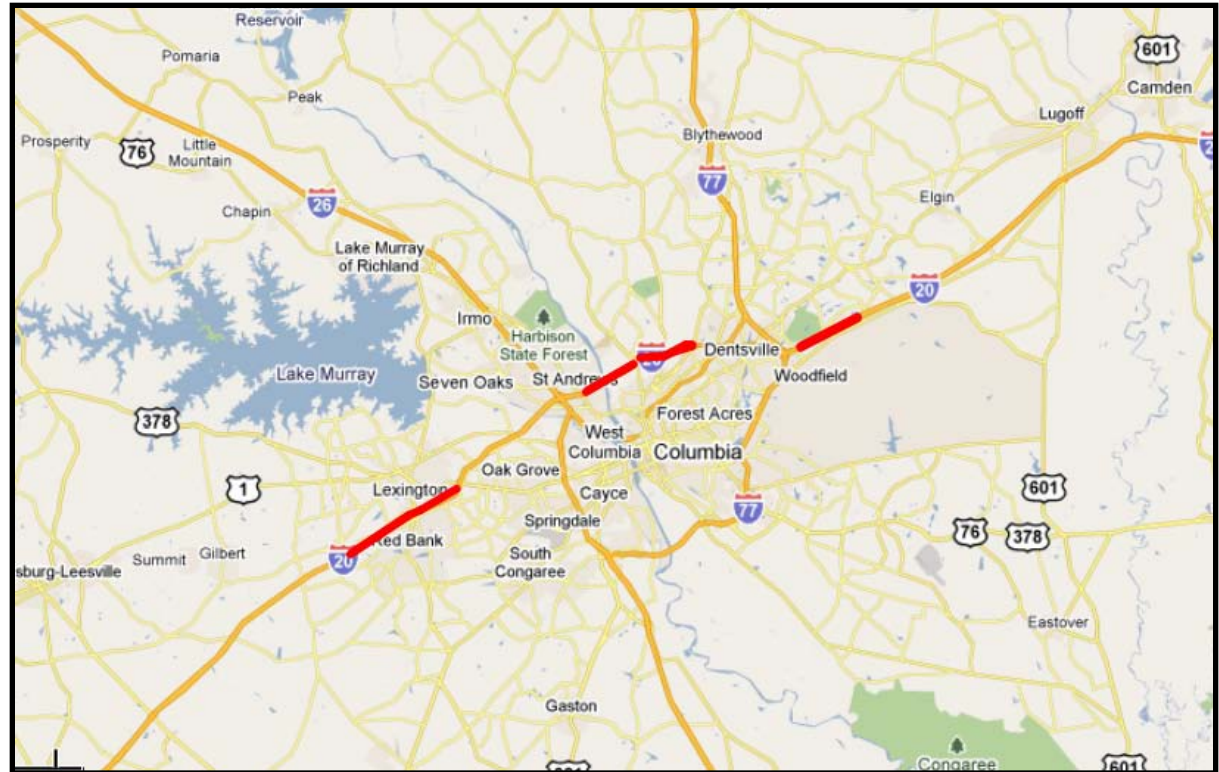
South Carolina Validation

February 2011

Freeways –

11 paths, 15 TMCs
26.1 miles
>1100 hrs of data
10 hrs of congestion

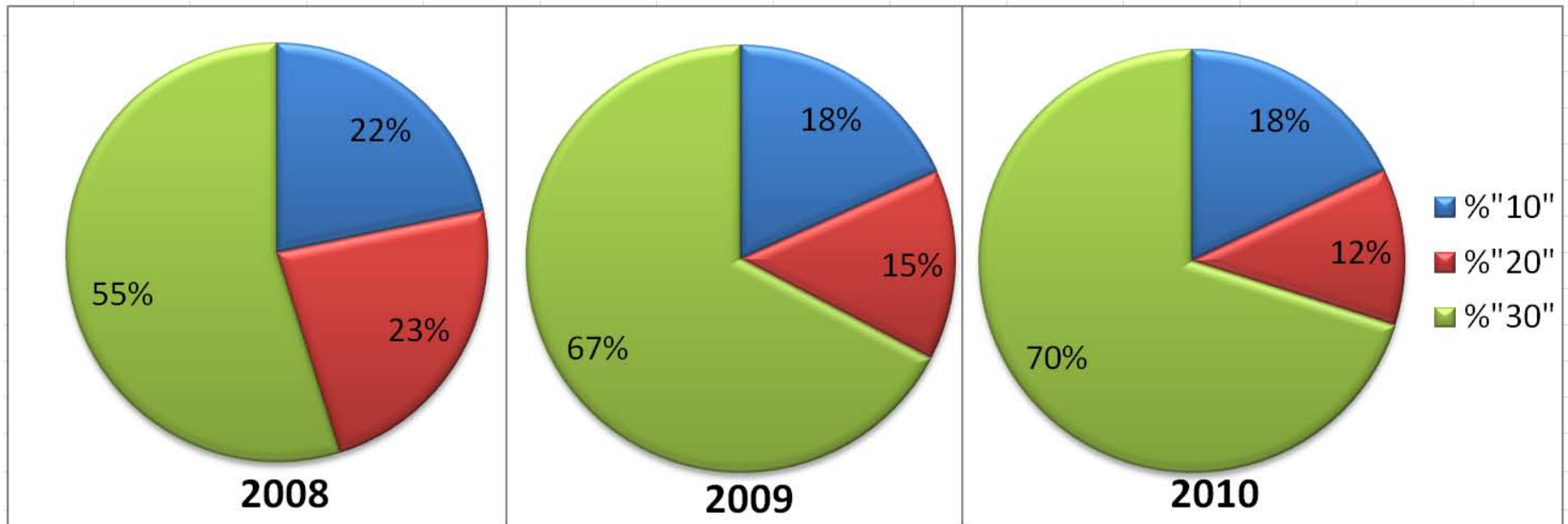
Arterials or Ramps –
None



Improvement in Real-Time Data Analysis of Score

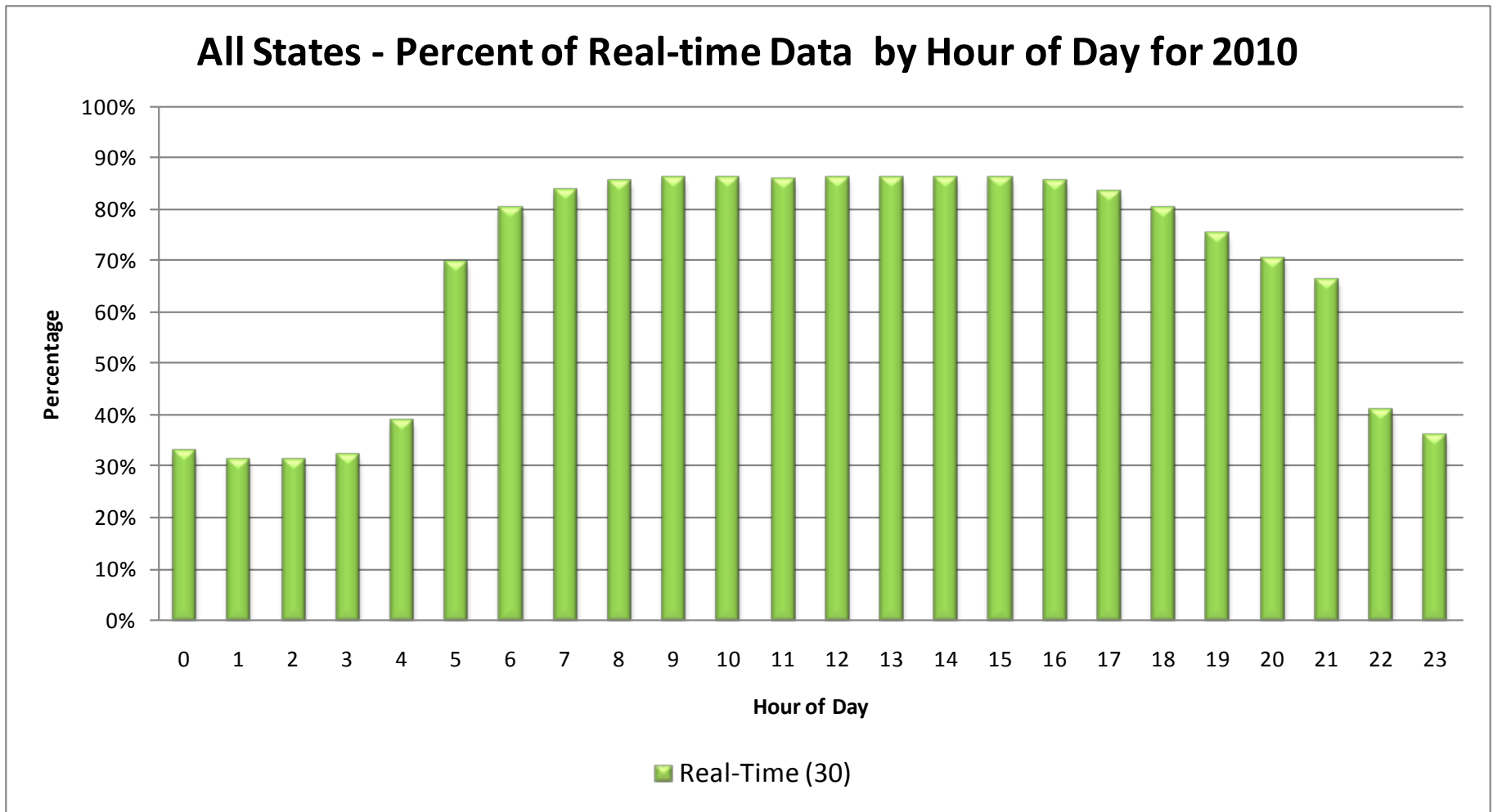
Change in Score from 2008 to 2010

30 - Real-time (green), 20 - Historical (red), 10 - Reference (blue)



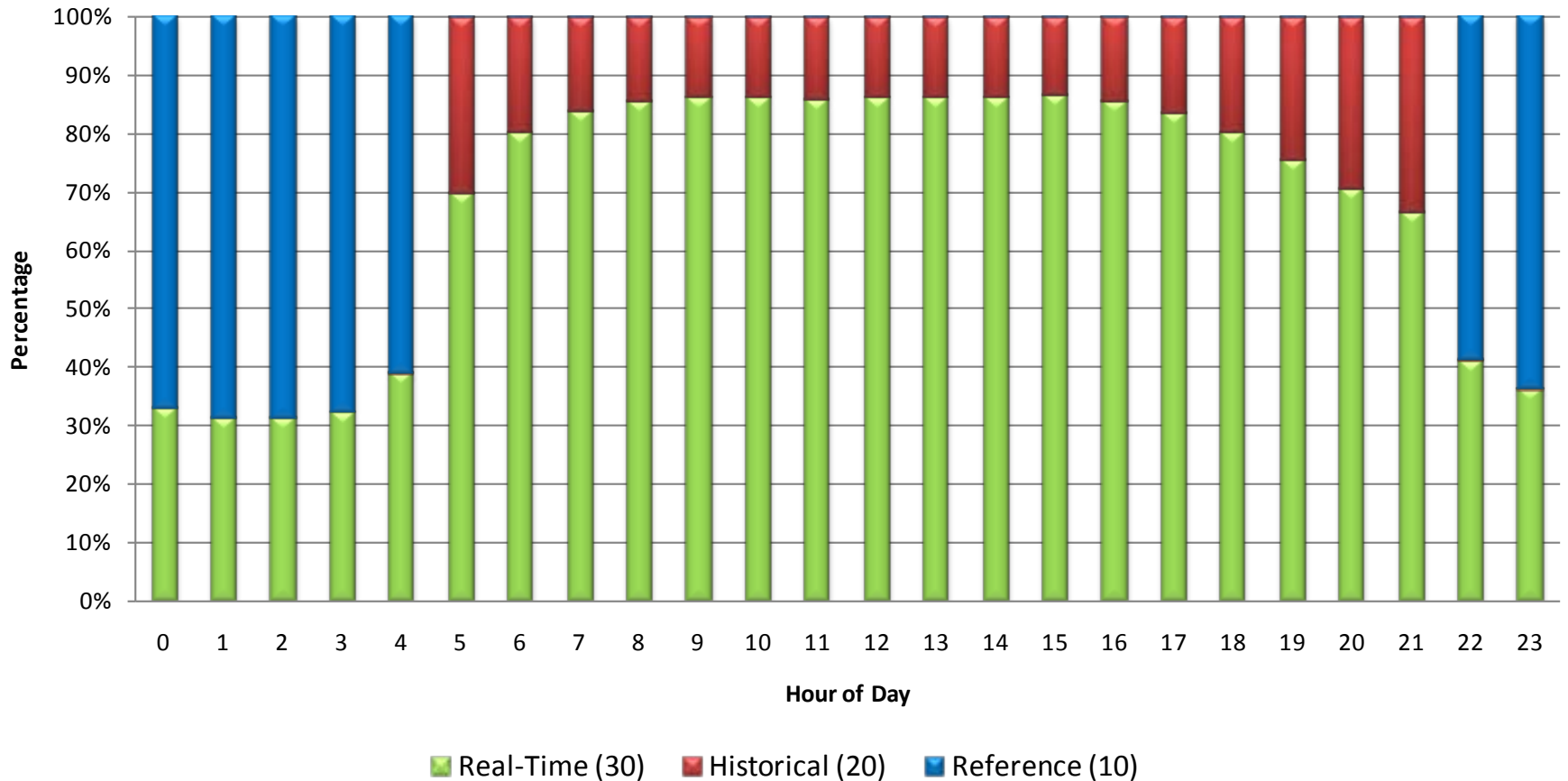
- Real-time data has increased from 55% in 2008 to 70% in 2010

Variation in Score throughout the Day



Variation in Score throughout the Day

All States - Percent Score by Hour of Day for 2010



Real-time Data Trends 2008 - 2010

- Percent Real-Time has improved
 - 55% in 2008 up to 70% in 2010
- Currently (2010)
 - Daytime > 80%
 - Nighttime ~35%
- Improvements have been primarily in daytime hours (5 am to 10 pm)

Data – In Depth



- Score & C-Value Analysis
- Filtering Based on Score and C-Value
- Volume Analysis

Are you interested in a specific technical webcast to discuss these topics?

Contract Issues and Year 19 Update

Kathy Frankle
University of Maryland

- DUA and Expansion Status
- Year 19 VPP Commitment Status
- Pooled Fund Study Status

DUA Status

Core States	
Delaware DOT	9-May-2008
Maryland SHA	12-Jun-2008
North Carolina DOT	15-Aug-2008
New Jersey DOT	19-Jun-2008
Pennsylvania DOT	----
Virginia DOT	26-Jun-2008

Other Coalition Members	
Baltimore MPO	17-May-2010
Delaware Valley Reg. Planning Comm.	22-Jul-2010
District of Col	22-Oct-2009
FHWA	03-Sep-2008
Florida DOT	07-Jun-2010
Georgia DOT	Inquired
Ft. Meade Reg. Growth Mgmt Committee	04-Feb-2011
MdTA	12-Dec-2008

Other Coalition Members (continued)	
MTA Bridges	23-Jul-2008
MWCOG	08-Jun-2009
New Hampshire DOT	03-Feb-2010
New Jersey Transit	In process
North Jersey TPA	17-Mar-2011
NJ Turnpike	12-Jan-2009
NY State DOT	25-May-2008
Philadelphia Police	15-Jul-2010
Port Authority NJ/NY	22-Oct-2009
PRTC	26-Nov-2008
Rhode Island DOT	08-Feb-2011
Richmond, VA MPO	21-Sep-2010
SC DOT	22-Jan-2009
South Jersey Transp. Auth.	14-Feb-2011

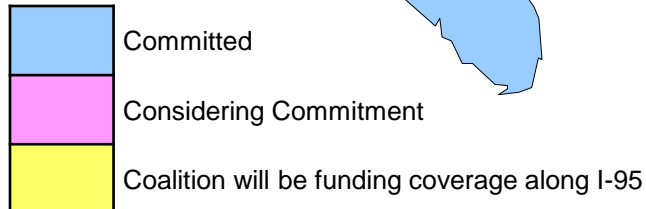
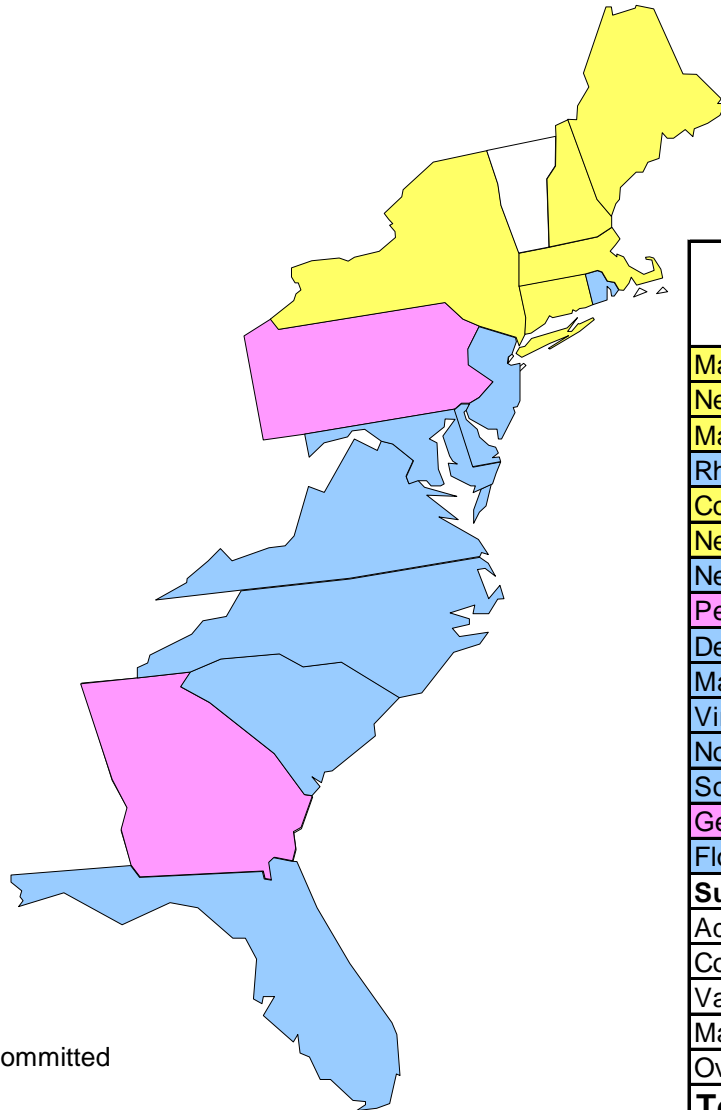
DUA Status (continued)

Consultants		
Company	On Behalf of	Date
AECOM	NJDOT, NJ Transit	20-Jul-2010
CSI	I-95 Coalition	12-Nov-2008
IBI Group	Virginia DOT	26-Jan-2011
IBM	NJ Turnpike	11-Mar-2011
Mixon-Hill	I-95 Coalition	12-Nov-2008
North Carolina State Univ/ ITRE	NC DOT	02-Sep-2009
Parsons Brinckerhoff	NJDOT	07-Apr-2011
Protronix	NC DOT	28-Jan-2010
Rutgers University	NJDOT	30-Nov-2010
Telvent	I-95 Coalition	13-Feb-2009
Telvent USA	Maryland SHA	25-Jan-2011
Transurban	VDOT	13-Jul-2009

Expansion Status

Coalition Members	DUA Status	Expansion
Core States		
Delaware DOT	9-May-2008	----
Maryland SHA	12-Jun-2008	1-Sept-2010
MdTA	12-Dec-2008	
North Carolina DOT	15-Aug-2008	16-Apr-2010 (Mod)
New Jersey DOT	19-Jun-2008	8-Jul-2008
Penn DOT	----	going thru Telvent contract
VDOT	26-Jun-2008	going thru PBS& J contract
Other Coalition Members		
Florida DOT	7-Jun-2010	7-Jun-2010
New Jersey Turnpike	12-Jan-2009	covered by NJDOT
South Carolina DOT	22-Jan-2009	14-July-2010 (Mod)

Year 19 VPP Commitment Status



State	Total Miles	Total Cost	State Participation	Coalition Cost
Maine	53	\$39,750	\$0	\$39,750
New Hampshire	16	\$12,000	\$0	\$12,000
Massachusetts	88	\$66,000	\$0	\$66,000
Rhode Island*	74	\$55,500	\$27,750	\$27,750
Connecticut	111	\$83,250	\$0	\$83,250
New York	24	\$18,000	\$0	\$18,000
New Jersey	470.5	\$365,375	\$188,938	\$176,438
Pennsylvania	148.3	\$111,225	\$55,613	\$55,613
Delaware*	46	\$34,500	\$17,250	\$17,250
Maryland/DC	297.2	\$235,400	\$123,950	\$111,450
Virginia	305.5	\$241,625	\$127,063	\$114,563
North Carolina	261.8	\$208,850	\$110,675	\$98,175
South Carolina	220	\$177,500	\$95,000	\$82,500
Georgia	112	\$84,000	\$0	\$84,000
Florida	728	\$558,500	\$285,500	\$273,000
Sub-Total	2955.3	\$2,291,475	\$1,031,737.50	\$1,259,737.50
Additional Costs				
Contingency		\$100,000	\$0	\$100,000.00
Validation		\$336,279	\$0	\$336,279.00
Management		\$148,099	\$0	\$148,099.00
Overhead		\$12,500	\$0	\$12,500.00
Total		\$2,888,353	\$1,031,738	\$1,856,616

* Agency is contracting through Pooled Fund

Pooled Fund Study Status

- Vehicle Probe Project Pooled Fund has been posted
- Solicitation #1304
- <http://www.pooledfund.org/projectdetails.asp?id=1304&status=1>
- States using the pooled fund need to use SPR funds
- Delaware, Rhode Island and Virginia need to commit to the project by May 30, 2011 at the latest
- Working on a waiver so the project will be 100% federal funds instead of 80/20

Long Distance Trip Planner (LDTP)

Karen Jehanian

Long Distance Trip Planner Update

- Sent request to member agencies via email on April 7 and 8, 2011 for prominent “Multi-State Trip Planner” link to LDTP website and for agencies to advise travelers prior to a major event of LDTP.
- LDTP will continue for another 12 months and will be monitored to assess usage and benefit to the Coalition members

I-95 Corridor Travel Time Information
I-95 CORRIDOR COALITION | SafeTrip-21
Traffic | Travel Time | Refresh Map | Links | Help/FAQ | Contact Us

Travel Time Information
Select a state: [Dropdown]
Select a location: [Dropdown]
Select a state: [Dropdown]
Select a location: [Dropdown]
Get Travel Time
Traffic Color Schema: Standard

Color Legend:
Free Flow
Moderate
Heavy
Stop and Go
Road Closed

Traffic updated on Thursday, Feb. 10, 2011 at 1:22 PM EST
Copyright 2011 of INRIX. INRIX is a registered trademark of INRIX.

This I-95 Corridor Long Distance Trip Planning Website is sponsored by the U.S. Department of Transportation (USDOT) - Research and Innovative Technology Administration. This website is part of a cooperative research effort among the USDOT, I-95 Corridor Coalition, INRIX, and the University of Maryland to evaluate how providing congestion information and travel times may assist travelers and is based on a portion of the I-95 Corridor from Maine to Florida. This site is best viewed with screen resolution 1024 x 768 or higher. University of Maryland, Copyright © 2009

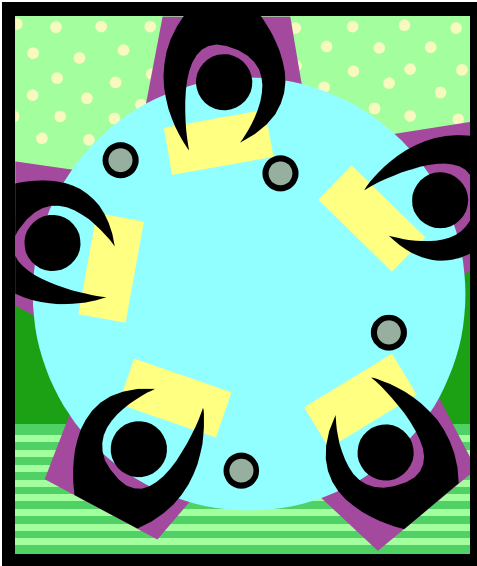


to **Scott Silva (VDOT)** for working so quickly to add a link to the LDTP
and
to **Todd Westhuis and the folks at NYSDOT** for their efforts in supporting the LDTP

Vehicle Probe Project Suite (Performance Measures Tool)

***Michael VanDaniker
University of Maryland***

Using the VPP Data for Performance Measures



Are you and other transportation agencies in your area interested in finding out more information on using the VPP Data for Performance Measures?

Would you be willing to host a meeting with local transportation agencies currently using the data or interested in doing so?

If interested, please contact the VPP Management Team to schedule a meeting.

Agency Updates and/or Questions for the Project Team

All

Participation in Meetings/Conferences

Karen Jehanian

Meetings of Interest

- TRB – 4th International Transportation Systems Performance Measurement Conference
 - May 18 – 20, 2011, Irvine, California
- 2011 ITE Annual Meeting & Exhibit
 - August 13-16, 2011, St. Louis, MO
- TRB – Conference on Performance Measures for Transportation and Livability
 - Late September 2011, Austin, Texas
- 2011 ITS World Congress, Orlando, FL
 - October 16 – 20, 2011

Participation in Meetings/Conferences/Papers

	Title	Paper	Presentation	Primary Author	Additional Authors	Notes
1	Challenges to Effective Arterial Traffic Monitoring: Lessons from the I-95 Corridor Coalition's Vehicle Probe Project	ITSWC		Stan Young	George Schoener, I-95 Corridor Coalition, Karen Jehanian, KMJ Consulting, Inc.	submitted
2	An Interactive, Web-based, Mobility Performance Measures Application Utilizing Probe Data	ITSWC	ITSWC	Michael Pack		submitted
3	Outsourced Data Use for Operations Performance Measures and Planning		ITSWC	Karen Jehanian	Stan Young, UMD/ Shawn Turner, TTI/ Michael Pack, UMD/ Andrew Meese, MWCOG	submitted

Review of Action Items from this Webcast

Selection of Date for Next Project Team Meeting

Tuesday, May 24, 2011

10:30 AM

(proposed)

All

Questions?

- Stan Young at 301-403-4593 or seyoung@umd.edu
- Rick Schuman at 407-298-4346 or rick@inrix.com
- Karen Jehanian at 610-228-0211 or kjehanian@kmjinc.com
- For contract expansion issues Kathy Frankle at 410-414-2925 or kfrankle@umd.edu

Thank You



**I-95 CORRIDOR
COALITION**