

Vehicle Probe Project Web Conference



Status Update

November 3, 2011



Call Courtesies

- Please give your name and agency before asking your question (at least the first time)
- Please keep your phone muted until asking a question or speaking (**press *6 to mute/unmute individual phone lines**)
- Please do not place call “on hold” as your hold music may be heard by the group
- Please call 610-662-5569 for difficulties with the web application

Agenda

Topic		Speaker
1	Introductions and Welcome	George Schoener
2	Communications Update	Karen Jehanian
3	INRIX Update	Rick Schuman
4	Data Validation Effort	Stan Young
5	Performance Measures Tool Update	Michael L. Pack
6	Contract Update	Kathy Frankle
7	USDOT's Multistate Corridor Operations and Management Program Competition	George Schoener
8	Selection of Date for Next Webcast	All

Introductions and Welcome

George Schoener
I-95 Corridor Coalition

Communications Update

*Karen Jehanian,
KMJ Consulting*

- Team Correspondence/
Coalition Website Postings

Project Team Correspondence (page 1 of 2)

Correspondence Sent to the VPP Team		
DOCUMENT	DATE SENT	METHOD
Update to Tools for Performance Measures in the Vehicle Probe Project Suite	November 2, 2011	Via listserv
September 20, 2011 VP Team Webcast – Presentation and Meeting Minutes	October 14, 2011	Via email
Vehicle Probe Project One-Pager	October 14, 2011	Via email
Vehicle Probe Project Quick Reference Guide	October 14, 2011	Via email
Updated Project Interface Guide 3.4	October 11, 2011	Via email & listserv
Validation of INRIX Data – Monthly Report – New Jersey (dated September 2011) – separate reports for freeways and ramps	October 11, 2011	Via email

Project Team Correspondence (page 2 of 2)

Coalition Website Postings		
DOCUMENT	DATE POSTED	LOCATION ON WEBSITE
September 20, 2011 VP Team Webcast – Presentation and Meeting Minutes	October 14, 2011	On the Highlights page under “Project Presentations”
Vehicle Probe Project One-Pager ¹	October 14, 2011	On the Highlights page under “General Information & Press”
Vehicle Probe Project Quick Reference Guide ¹	October 14, 2011	On the Highlights page under “General Information & Press”
Updated Project Interface Guide 3.4 ¹	October 11, 2011	On the Highlights page under “Technical Information”
Validation of INRIX Data – Monthly Report – New Jersey (dated September 2011)	October 11, 2011	On the Highlights page under “Data Validation”

¹ These documents are also available on the Coalition homepage, in the “News Flashes” box, within the “Vehicle Probe/Traveler Information” tab.

Locating Key VPP Info on the Coalition Website

The screenshot displays the I-95 Corridor Coalition website. At the top left is the logo with the text "I-95 CORRIDOR COALITION" and "Beyond Boundaries". To the right is a banner with the text "Working Together to Accelerate Improvements in Long-Distance Passenger Travel and Freight Movement". Below the banner is a navigation bar with links: Home, Committees, Projects, Library, Training, Travel Information, and Calendar. On the left is a "Home Menu" with links: What is the Coalition?, Organizational Chart, What's New, Members, Membership Search, I-95 Corridor Facts, and Contact Us. On the right is a "News Flashes" section with a table of categories: Traffic Incident Management, Electronic Tolling, CVII Demo, Performance Measures, 2040 Vision, Vehicle Probe/Traveler Information (highlighted in red), M-95 Highway Corridor, and VMT-Based Charge Initiative. Below the table is a news item titled "I-95 Vehicle Probe Project Delivers Real-Time Travel Information" with a list of related documents and links, including "Project Page", "Project One-pager", "Quick Reference Guide", "Project Interface Guide 3.4", "Overall Vehicle Probe Project Benefits Paper", and "Two-Year Validation Report". A red arrow points to the "Vehicle Probe/Traveler Information" category, and three red arrows point to the "Contact Us" link, the "I-95 CORRIDOR COALITION" logo, and the "A partnership of transportation agencies and related" text.

I-95 CORRIDOR COALITION
Beyond Boundaries

Working Together to Accelerate Improvements in Long-Distance Passenger Travel and Freight Movement

Home Committees Projects Library Training Travel Information Calendar

Home Menu

- What is the Coalition?
- Organizational Chart
- What's New
- Members
- Membership Search
- I-95 Corridor Facts
- Contact Us

News Flashes

Traffic Incident Management	Electronic Tolling	CVII Demo	Performance Measures	2040 Vision	Vehicle Probe/Traveler Information	M-95 Highway Corridor	VMT-Based Charge Initiative
-----------------------------	--------------------	-----------	----------------------	-------------	-------------------------------------------	-----------------------	-----------------------------

I-95 Vehicle Probe Project Delivers Real-Time Travel Information

Related Documents and Links:

- Project Page (Note: Most of the VPP documents/reports are located here on the "Highlights" tab)
- Project One-pager
- Quick Reference Guide
- Project Interface Guide 3.4 (updated September, 2011)
- Overall Vehicle Probe Project Benefits Paper - August 2010
- Two-Year Validation Report - Revised 2010

The I-95 Vehicle Probe Project is a groundbreaking initiative

VPP Quick Reference Guide



Quick Reference Guide

October 14, 2011

Project Documents

Project Web Site: <http://tinyurl.com/vppdoc>

Click on the "Highlights" tab after following the above link.

Project Interface Guide: <http://tinyurl.com/vppinterfaceguide-sep2011>

Information for integrators of VPP data.

VPP Monitoring Site

<http://i95.inrix.com>



Must have an account and you're your agency have signed a Data Use Agreement (DUA)

Account request page: <http://i95.inrix.com/i95/Register.aspx>

VPP Analysis Suite

<http://vpp.ritis.org>



Send account requests to accounts@ritis.org

Send feedback to vpp-feedback@ritis.org

Tutorial and Summary: <http://vpp.ritis.org/suite/screencast/>

Long Distance Trip Planner

<http://www.i95travelinfo.net>



Coalition-wide Web Site for multi-state travelers.

Member Agencies: Please include link to site on your public 511/travel information page.

Who to contact with Questions



INRIX Monitoring Site
Vehicle Probe Project Suite
Data Validation
VPP Contract Issues
General Project Questions

Rick Schuman at 407-298-4346, rick@inrix.com
Michael Paek at 301-405-0722, PackMI@umd.edu
Stan Young at 301-403-4593, seyoung@umd.edu
Kathy Frankle at 410-414-2925, kfrankle@umd.edu
Karen Jehanian at 610-228-0211, kjehanian@kmiinc.com

October 14, 2011



Vehicle Probe Project
Quick Reference Guide

INRIX Update

Rick Schuman
INRIX

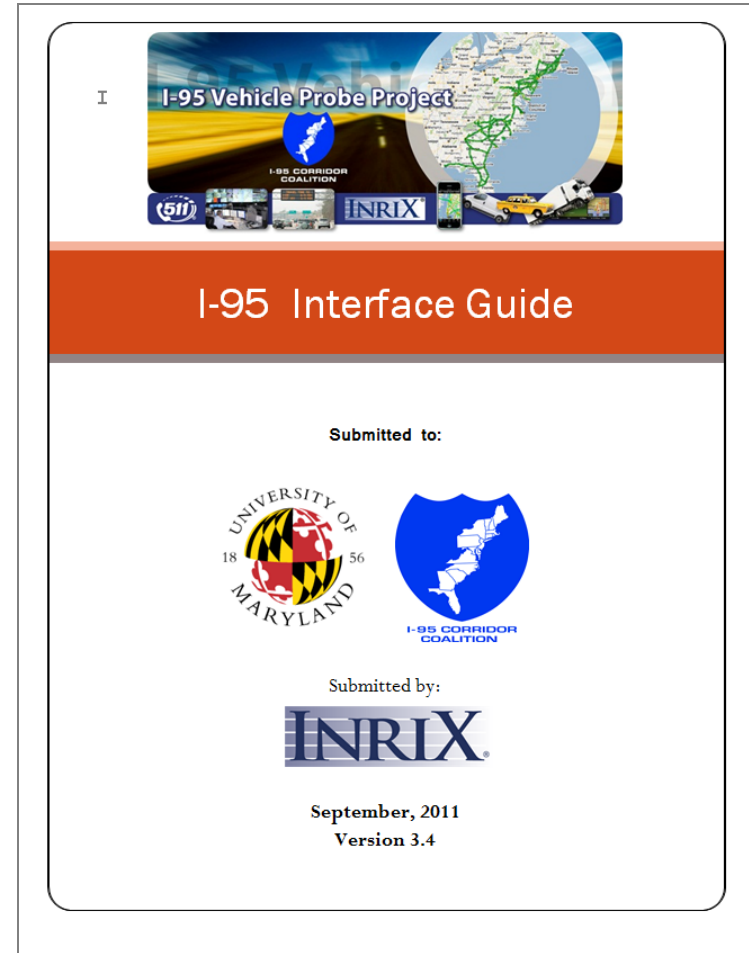
- Project Statistics
- Interface Guide Update
- Press Release
- Other Topics in Development
 - Road Closure Process
 - New Roads for Coverage Process

Project Statistics

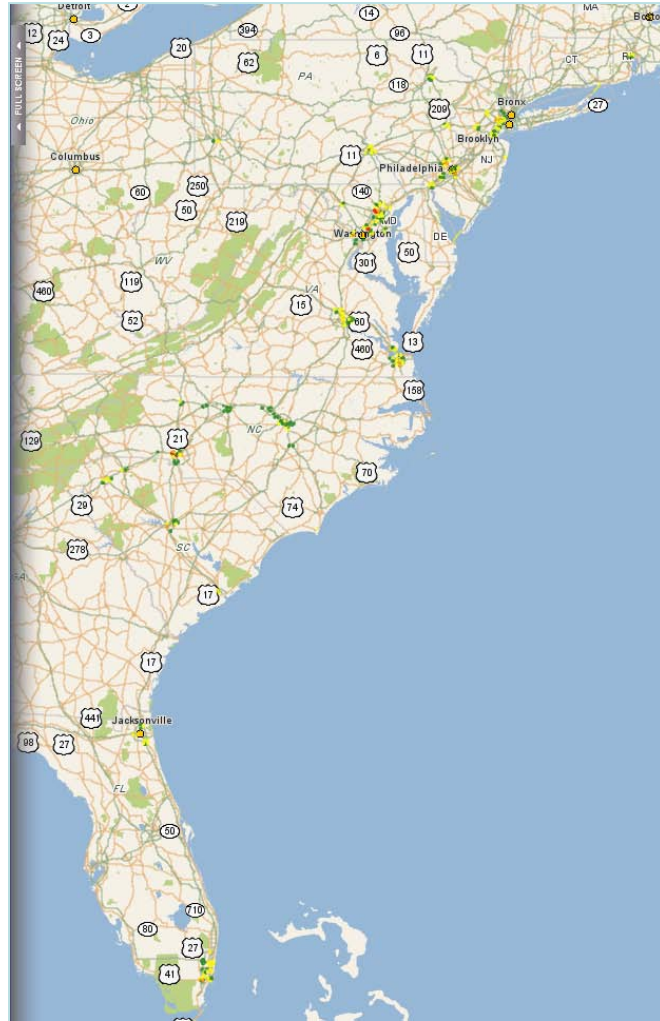
- Availability
 - 99.83% in September
 - 99% contract requirement
 - 99.88% in 2009; 99.94% in 2010; 99.94% YTD in 2011
- Users (as of 10/2/11)
 - Monitoring Site – 461
 - Data Feed – 44
 - Archive requests – 728 since launch
 - 22 between Sept 6 and Oct 2

Project Interface Guide

- Version 3.4 posted to Coalition website
- Reviewed by Stan
- Primary Updates:
 - Interchange ramp data access
 - Custom TMC Set/Coverage process



Current Interchange Coverage



State	Interchanges Covered
Rhode Island	5
New Jersey	21
Pennsylvania	22
Delaware	3
Maryland	24
Virginia	19
North Carolina	34
South Carolina	13
Georgia	0
Florida	18
Total	159

VPP Extension/Expansion Press Release

- Release October 11
- Thinking Highways and ITS International Feature articles as a result?

The image shows a composite of two documents. The top document is a press release from INRIX and the I-95 Corridor Coalition. The bottom document is an email newsletter from ITS International.

INRIX
I-95 Corridor Coalition with INRIX Expands Vehicle Probe Project
Helping States Do More With Less

- Coalition Expands and Extends the Nation's Largest Public-Private Traffic Data Partnership to 2014
- Ten States Now Using INRIX Traffic Data for More Than 20,000 Miles of Roads to Streamline Operations, Pinpoint Investments and Deliver Better Traveler Services

College Park, MD and Kirkland, WA – October 11, 2011 – The I-95 Corridor Coalition, the University of Maryland and INRIX announced a 3-year extension and expansion of a program that improves how state and federal transportation agencies allocate billions of dollars in funds.

The I-95 Coalition Vehicle Probe Project (VPP), first operational in 2008 and advanced analytics techniques to turn billions of data points into the manner in which member states build, manage and measure their roads provides INRIX real-time and historical traffic information for more than 20,000 miles of roads along the I-95 corridor.

"By expanding the program, we expect to achieve even greater gains in transportation networks and help our members provide improved service to their citizens," said James Schoener, Executive Director, I-95 Corridor Coalition. "The significance of this expansion to our member agencies is very clear, with all 10 states investing some level of their own money in the program over the next three years."

Key elements of the project's expansion over the next 3 years include:

- **Massive Coverage Expansion.** The project coverage increases from 10 states to 18 states, covering more than 20,000 centerline miles in 10 states to more than 40,000 centerline miles in 18 states. Complete freeway coverage in 6 states – Rhode Island, N

ITS International
The Leading Magazine in Advanced Technology for Traffic Management and Urban Mobility

Hello ITS International Reader,

I have pleasure in providing you with a selection of important industry news, interesting features, product launches and industry events in this eNewsletter.

You'll also be hearing from me next week. Doubtless you are aware that the ITS World Congress officially opens in Orlando, Florida, on Sunday. A team of ITS International journalists will be there to cover the event, and to bring you announcements and news, live, as they happen. So we will be compiling a daily eNewsletter and emailing it on Monday, Tuesday, and Wednesday.

As always, I welcome your feedback and comments.

Kind regards
James Foster
News Editor, ITS International
jfoster@ropi.com

Register for a FREE ITS International magazine subscription

Genie TS - World's Most Versatile ITS Camera
TELEDYNE DALSA

News
I-95 Corridor Coalition vehicle probe project massively expanded
The I-95 Corridor Coalition, the University of Maryland and Inrix have announced a three-year extension and expansion of the I-95 Coalition Vehicle Probe Project (VPP), operational since 2008.
Read more.

Data Validation Update

Stan Young
University of Maryland

- Status and Schedule
- Validation Results Backlog
- Truck analysis
- Arterial Analysis – NJ Route 1 and Route 18

Data Validation Status

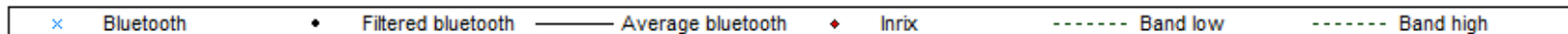
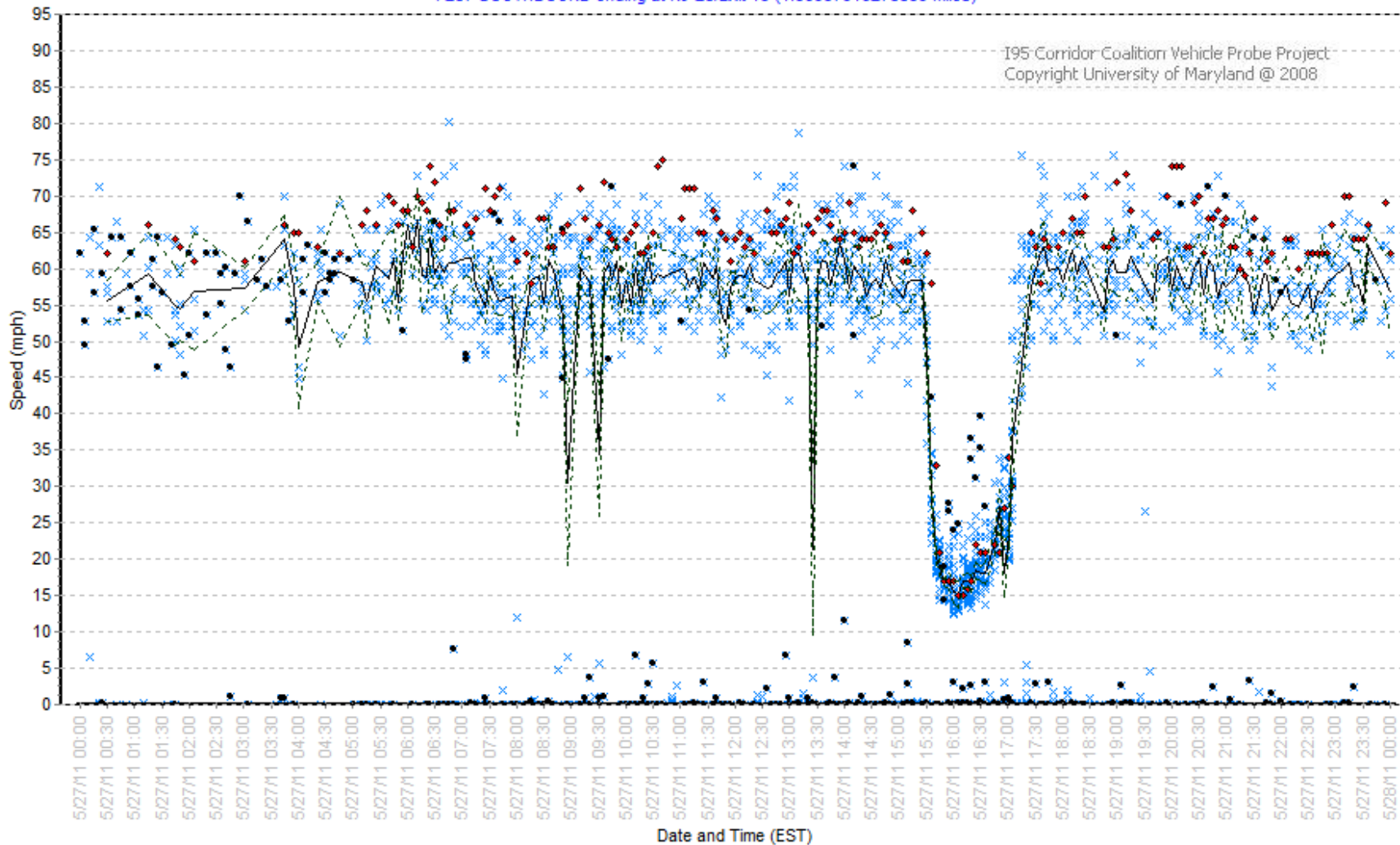
Month and Year	State	Ground Truth Data Collection [By mid-month]	Data Processed and Preliminary Results Ready for Review [By end of Month]	UMD Review	INRIX Review	State Review & Briefing [+ 2 weeks]	Publish [+ 2 weeks]
				[+ 2 weeks]			
Apr-11	NJ	<i>Apr 10 -29</i>	<i>30-Jun-11</i>	<i>14-Jul</i>	<i>14-Jul</i>	<i>15-Sep</i>	<i>19-Sep-11</i>
May-11	NJ	<i>May 19 - Jun 2</i>	<i>30-Jun-11</i>	15-Oct	15-Oct	31-Oct	14-Nov-11
Jun-11	DE	<i>26-Jun-11</i>	<i>20-Aug-11</i>	15-Oct	15-Oct	31-Oct	14-Nov-11
Jul-11	VA	<i>5-Aug-11</i>	15-Oct-11	29-Oct	29-Oct	14-Nov	28-Nov-11
Aug-11	PA	<i>28-Aug-11</i>	15-Oct-11	29-Oct	29-Oct	14-Nov	28-Nov-11
Sep-11	MD	<i>28-Sep-11</i>	15-Oct-11	29-Oct	29-Oct	14-Nov	28-Nov-11
Oct-11	FL/RI/GA	<i>25-Oct-11</i>	8-Nov-11	22-Nov	22-Nov	8-Dec	22-Dec-11

- **Processing Delays** : NJ–May, DE-Jun, VA-Jul
- **Aug 2011**: PA – Near Harrisburg
- **Sep 2011** : MD – I-695 and Arterials
- **Remaining 2011** : Move to new states – FL, RI, GA

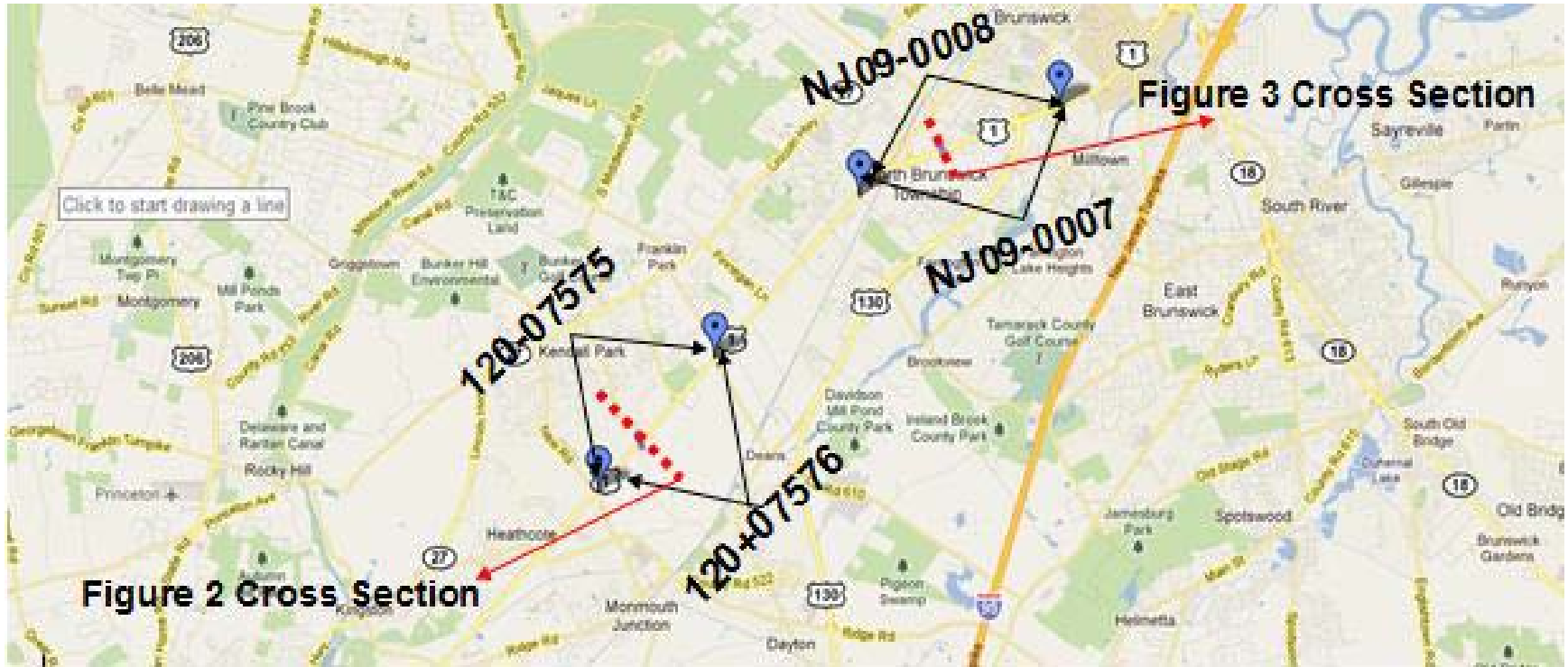
NJ I-287 - May 27, 2011

TMC: NJ09-0003

I-287 SOUTHBOUND ending at NJ-28/Exit 13 (1.36937916278839 miles)



Arterial Analysis - NJ US 1



- NJ May Data – May 19 through June 2

Sample Cross-Sections

Arterial NJ US 1



Sample Cross-Sections

Arterial NJ US 1



Attributes

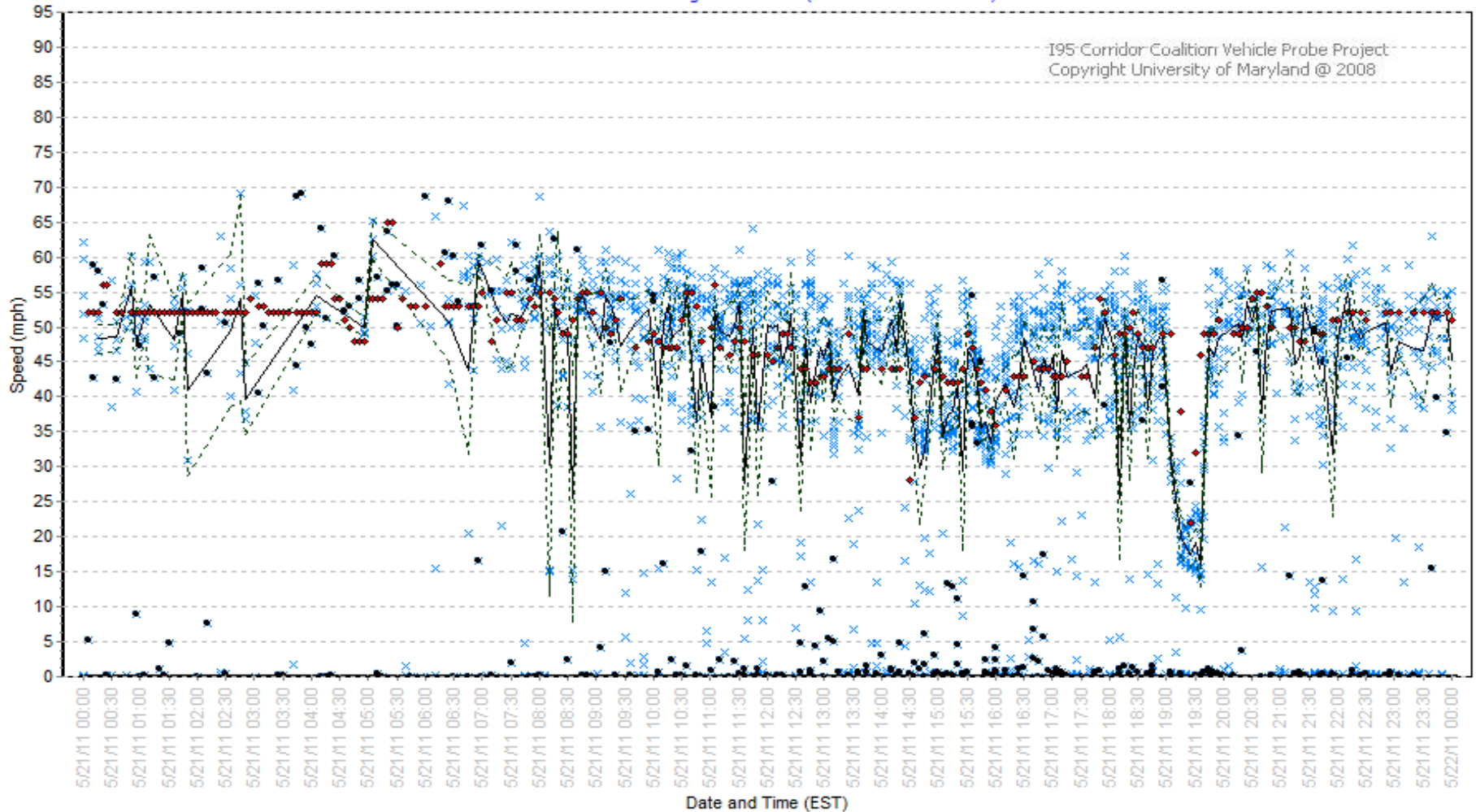
Arterial NJ US 1

TMC	Number of Lanes	Number of Signals	Signals per Mile	Number of Right Exits other than Signals	Number of Right Exits other than Signals per Mile	Number of Exits other than Signals
NJ09-0007	3	4	1.4	9	3.2	0
NJ09-0008	3	3	1.2	7	2.7	0
120-07575	2	3	1.4	4	1.9	0
120+07576	2	3	1.4	6	2.7	0

Estimated Volume ~35000 AADT

Sample Results - Arterial NJ US 1

TMC:120+07576
US-1 NORTHBOUND ending at Deans Ln (2.201744556427 miles)

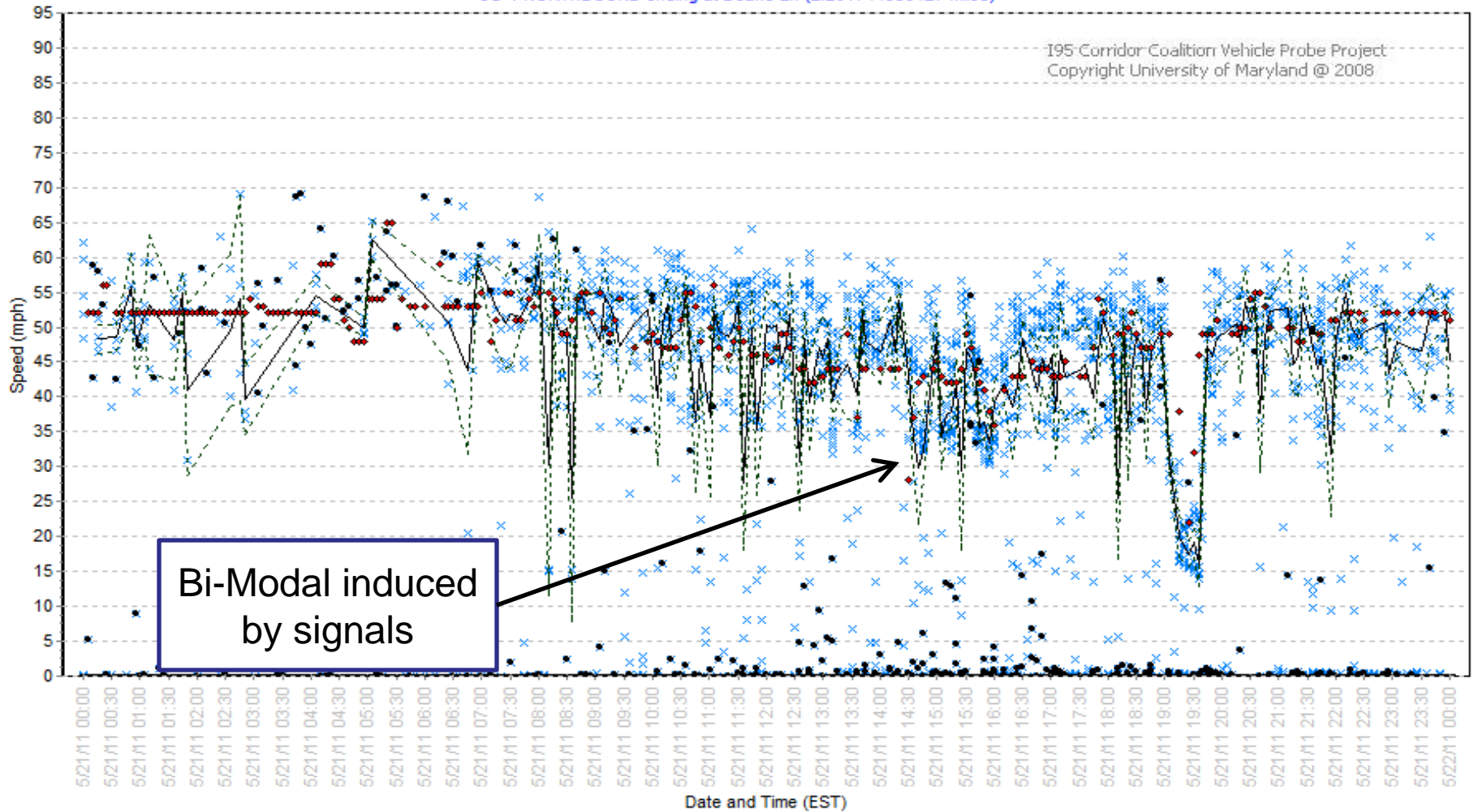


× Bluetooth • Filtered bluetooth — Average bluetooth ♦ Inrix - - - - - Band low Band high

Sample Results - Arterial NJ US 1

TMC:120+07576
US-1 NORTHBOUND ending at Deans Ln (2.201744556427 miles)

I95 Corridor Coalition Vehicle Probe Project
Copyright University of Maryland @ 2008



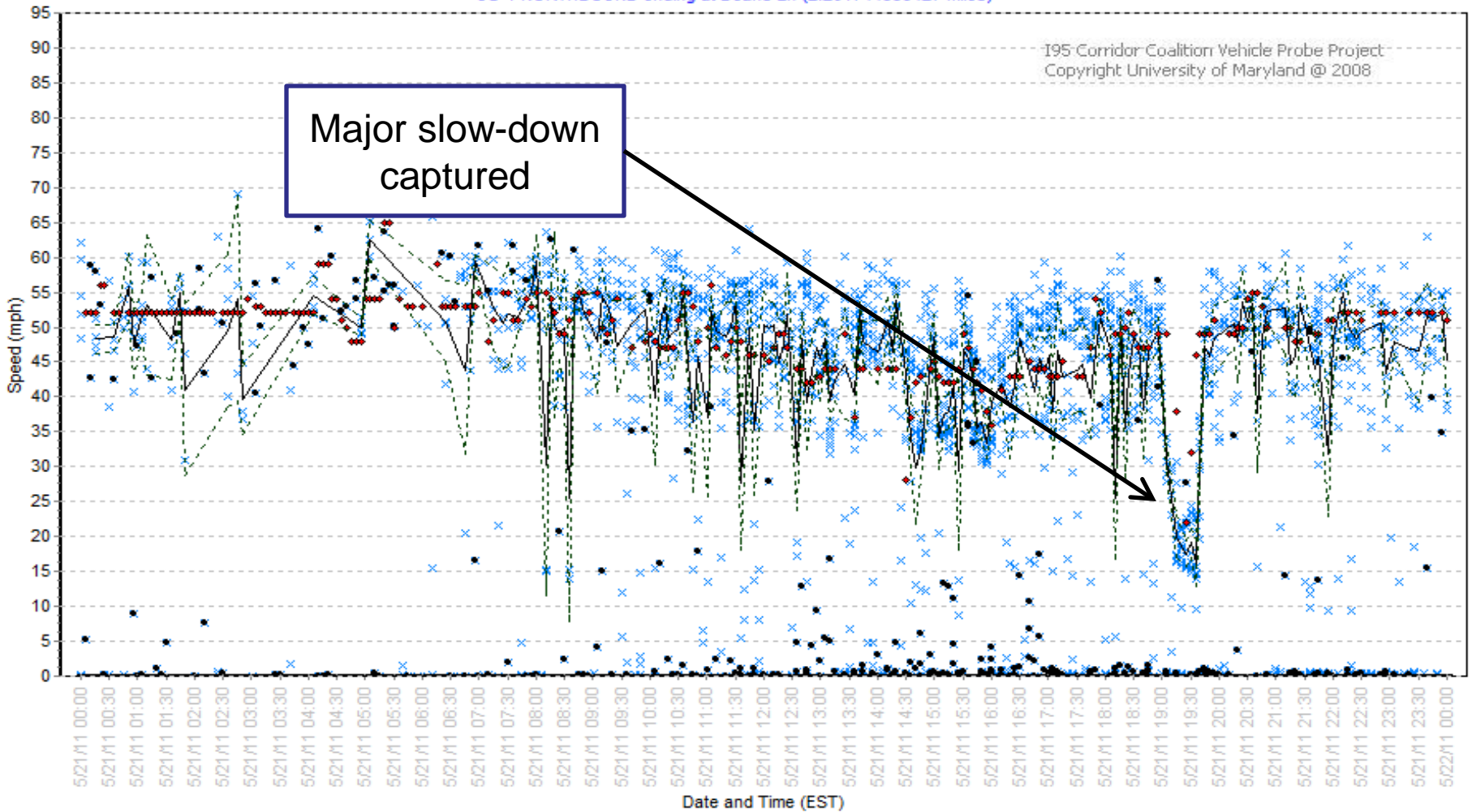
× Bluetooth • Filtered bluetooth — Average bluetooth ◆ Inrix - - - - - Band low Band high

Sample Results – Arterial NJ US 1

TMC:120+07576
US-1 NORTHBOUND ending at Deans Ln (2.201744556427 miles)

I95 Corridor Coalition Vehicle Probe Project
Copyright University of Maryland @ 2008

Major slow-down
captured

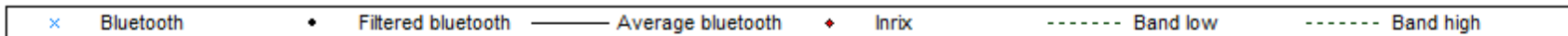
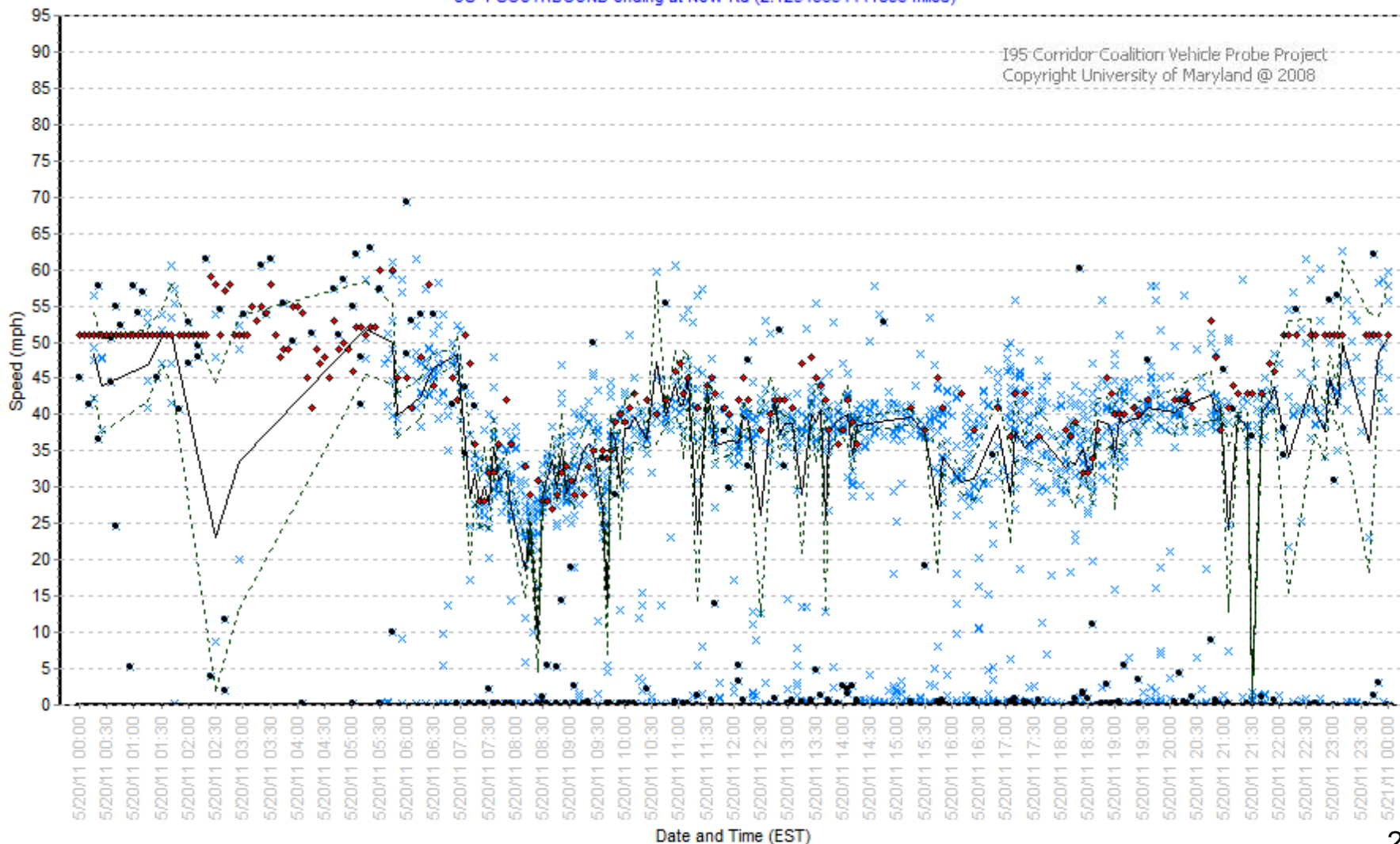


× Bluetooth • Filtered bluetooth — Average bluetooth ◆ Inrix - - - - - Band low Band high

Additional Sample Results - Arterial NJ US 1

TMC:120-07575
US-1 SOUTHBOUND ending at New Rd (2.12543654441833 miles)

I95 Corridor Coalition Vehicle Probe Project
Copyright University of Maryland @ 2008



Conclusions – Arterial NJ US 1

- VPP performed well on US 1
- Current analysis subjective
- Further work
 - Refine filtering – DONE
 - Determine central tendencies (in process)
 - Determine validation metrics
 - Rescore segment
- Rt 18, similar, difficulties with BT data

Other Initiatives

Program	Paper	Status	Notes
ITS World	Arterials	Paper Complete	Presented
	Score & C-Value	Paper Complete	Presented
	Real-Time Data	Paper Complete	Presented
	Historical Data Perf.	Paper Complete	Presented
Year 17	Application Guide	Complete	
	Travel Time on Signs	In Review	
	Special Use Lanes	Nearing Final Draft	
White Papers	Arterials	In Process	
	C-Value	Recommend Distributing ITS World Paper	

VPP Suite (PM Tool) Update

Michael L. Pack
University of Maryland

VPP Access

- **Training Videos & Overview:**

<http://vpp.ritis.org/suite/screencast/>

- **To Gain Access:**

Step 1: Make sure your agency has signed the VPP DUA by visiting: <http://vpp.ritis.org/suite/dua/>

Step 2: Once your agency has signed, send individual user requests to: accounts@ritis.org with the following information:

- ✓ First & Last Name
- ✓ Agency Affiliation
- ✓ Address
- ✓ Phone Number
- ✓ Email

Step 3: Receive an email with your login credentials & instructions

Usage Stats

- As of November 1, 2011
 - Over 11-Billion records downloaded
 - Over 400 users have access
 - Over 40 agencies have access

VPP Suite – New Version

Updated 10/26/2011

Improves performance, fixes bugs and provides new features:

- [Bottleneck ranking](#) see all of the occurrences recurring bottlenecks and in both table and a time spiral visualization.
- [Historic tools](#) interface - redesigned for a more intuitive layout, similar to the other applications in the suite.
- Export all of the visualizations in the historic tools to Excel files so you can reproduce the graphics on your own computer using the raw data.
- URL in your browser's address bar updates as you drag and zoom around the map in the [dashboard](#). This URL can be copied & shared with other users.

Updated VPP Suite

Bottleneck Ranking

Vehicle Probe Project Suite | Home | Dashboard | Massive Raw Data Downloader | Congestion Scan | Historic Tools | Bottleneck Ranking

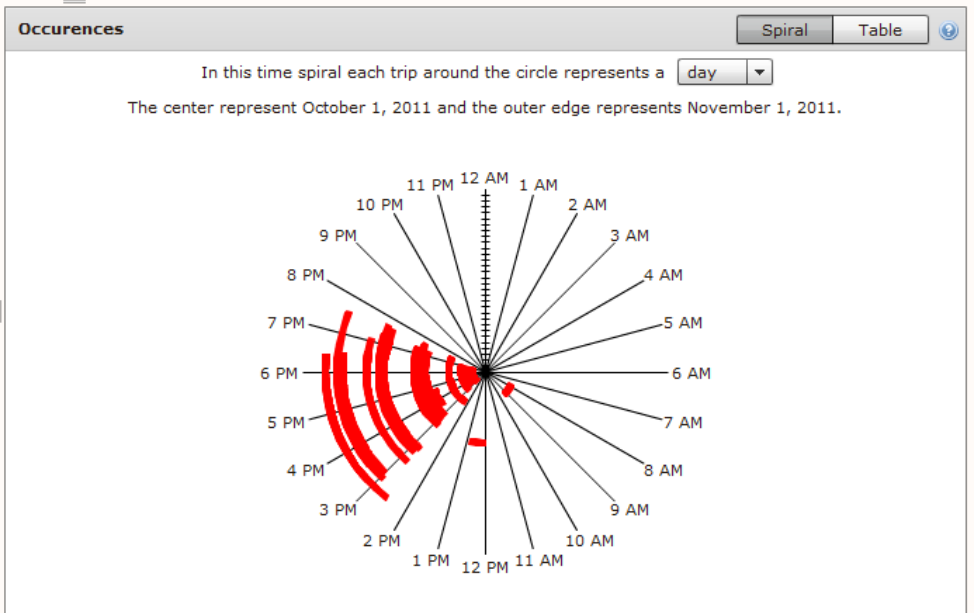
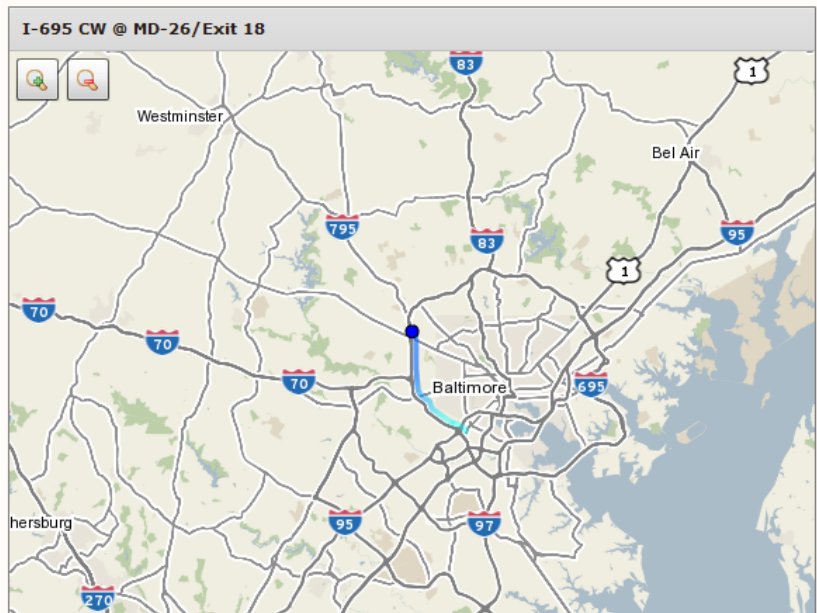
Bottleneck Ranking

New search

Bottlenecks on Maryland Interstates between October 1, 2011 and October 31, 2011 (686 total)

Export to CSV

Location	Average duration	Average length (miles)	Occurrences	Impact factor
I-270 S @ I-495/MD-355	2 h 21 m	24.96	55	193,585
I-495 CCW @ I-66/Exit 9	4 h 18 m	13.39	37	127,818
I-695 CW @ MD-26/Exit 18	2 h 51 m	9.79	39	65,294
I-495 CW @ I-270 Spur	2 h 35 m	4.86	78	58,717



Updated VPP Suite

Historic Tools – More Intuitive Layout

Vehicle Probe Project Suite | [Home](#) | [Dashboard](#) | [Massive Raw Data Downloader](#) | [Congestion Scan](#) | **Historic Tools** | [Bottleneck Ranking](#)

Historic Tools

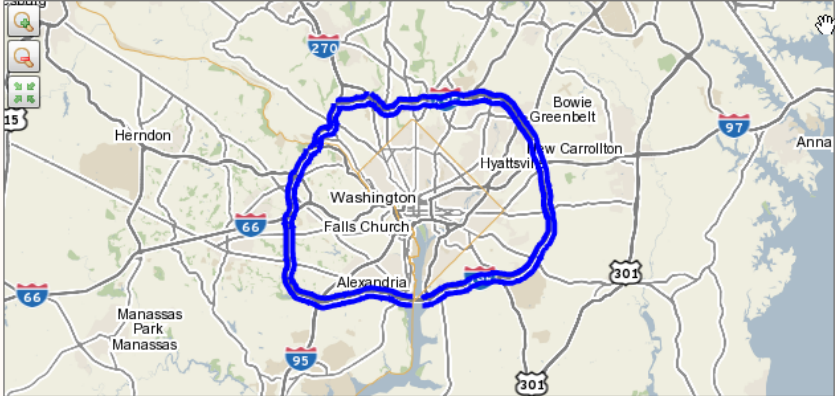
Introduction | **Search Criteria** | Visualization Technique | Final Visualization

- Road**
I-495 in MD and VA ■
 Entire road State to state Partial road
 From:
 To:
 Clockwise Counterclockwise
- Metric**
- Group by**

 and include readings on
 Sun Mon Tue Wed Thu Fri Sat
- Date ranges**

For performance reasons, the max amount of time periods allowed is four.

Create a Date Range	Selected Date Ranges
1) Selection Type <input checked="" type="radio"/> Single Selection <input type="radio"/> Range	January 2011 Average data across January of 2011.
2) Period Selections Year: <input type="text" value="2011"/> Month: <input type="text" value="March"/> <input type="checkbox"/> Entire Year	February 2011 Average data across February of 2011.
	March 2011 Average data across March of 2011.



Updated VPP Suite

Historic Tools – More Intuitive Layout

Vehicle Probe Project Suite | [Home](#) | [Dashboard](#) | [Massive Raw Data Downloader](#) | [Congestion Scan](#) | **Historic Tools** | [Bottleneck Ranking](#)



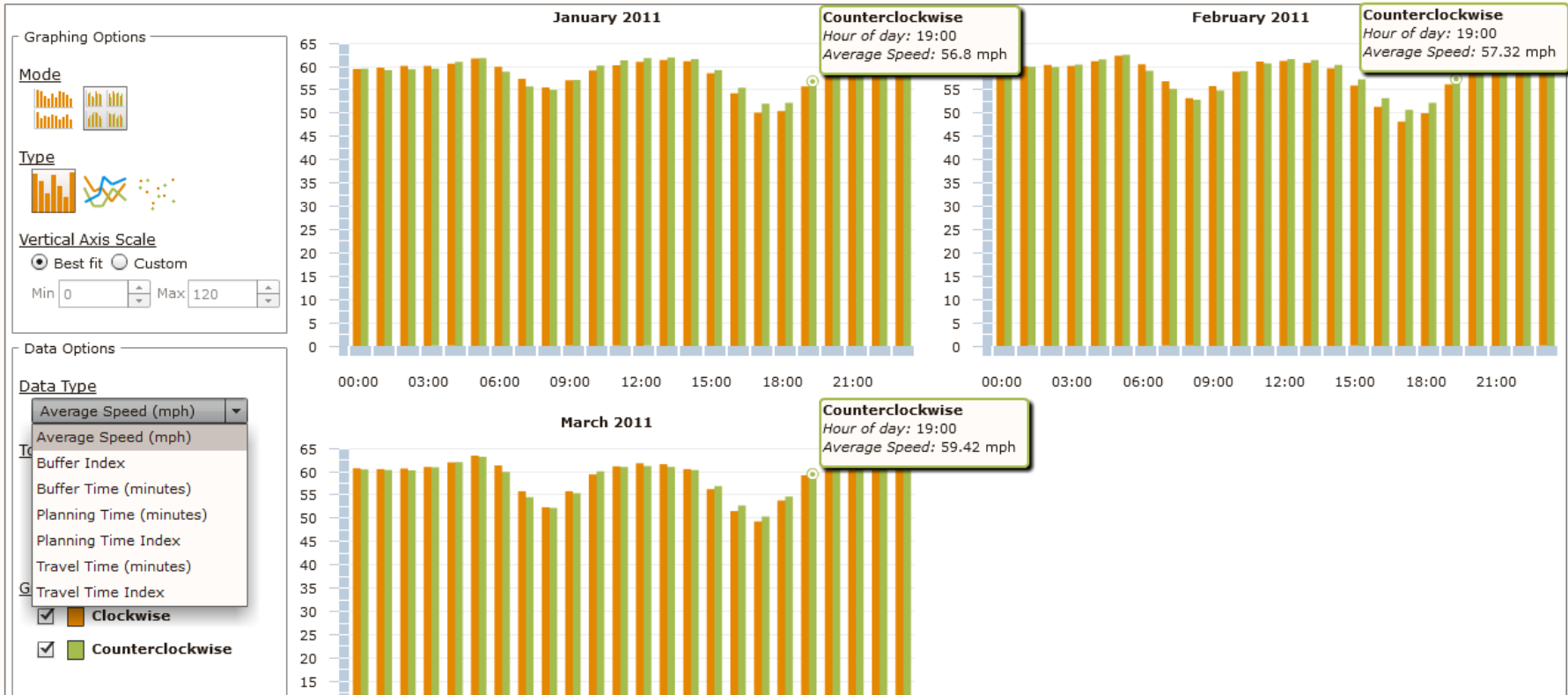
Historic Tools

Average Speed for I-495

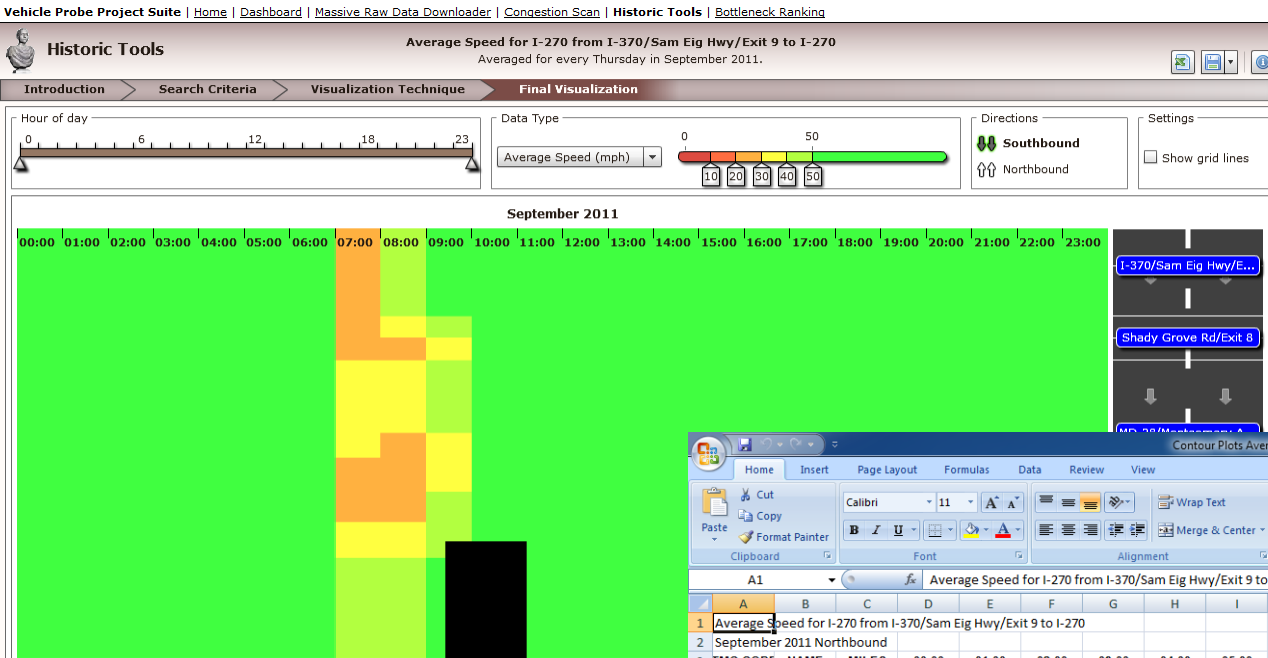
Averaged for every weekday in January 2011, February 2011, and March 2011.



Introduction > Search Criteria > Visualization Technique > **Final Visualization**



Updated VPP Suite Excel Exports



Contour Plots Average Speed I-270 - Microsoft Excel

	A	B	C	D	E	F	G	H	I	J	K	L	M	N	O	P	Q	R	S
1	Average Speed for I-270 from I-370/Sam Eig Hwy/Exit 9 to I-270																		
2	September 2011 Northbound																		
3	TMC CODE	NAME	MILES	00:00	01:00	02:00	03:00	04:00	05:00	06:00	07:00	08:00	09:00	10:00	11:00	12:00	13:00	14:00	15:00
4	110P0410	I-370/Sam	0.574049	63	62	62	60	61	63	63	64	64	63	63	63	63	63	63	63
5	110+0410	I-370/Sam	0.393781	64	63	62	60	61	63	64	62	65	64	60	64	63	60	62	54
6	110P0410	Shady Gro	0.490285	61	61	61	61	60	60	61	62	60	60	61	60	60	59	59	55
7	110+0410	Shady Gro	1.468555	60	60	60	60	59	59	59	59	58	58	58	58	58	57	56	58
8	110P0410	MD-28/Mt	0.44281	60	60	60	60	59	60	58	57	56	56	57	57	56	55	54	56
9	110+0410	MD-28/Mt	0.530738	60	60	59	60	59	60	58	58	56	56	57	56	56	55	53	53
10	110P0410	MD-189/F	0.3496	62	62	63	63	61	61	60	59	59	59	59	59	58	58	55	56
11	110+0410	MD-189/F	0.956645	61	60	61	60	60	60	58	58	57	57	58	58	57	56	55	56
12	110P0410	Montrose	0.523902	62	61	61	60	61	60	59	59	59	58	59	60	59	59	57	57
13	110+0410	Montrose	1.138529	62	62	61	61	63	63	61	62	62	61	63	62	61	61	59	61
14	110+04104	I-270	0.08246	63	62	62	62	63	63	62	61	61	60	62	62	61	61	60	57

Contract Issues

*Kathleen Frankle,
University of Maryland*

Contract Update

- **Data Use Agreements**
 - Georgia is working to finalize DUA
- **Pooled Fund Study Status**
 - **Vehicle Probe Project Pooled Fund - Solicitation #1304**
 - Virginia, Georgia, and Rhode Island working to transfer funds

DUA Status

Core States	
Delaware DOT	9-May-2008
Maryland SHA	12-Jun-2008
North Carolina DOT	15-Aug-2008
New Jersey DOT	19-Jun-2008
Pennsylvania DOT	----
Virginia DOT	26-Jun-2008

Other Coalition Members	
Baltimore MPO	17-May-2010
Delaware Valley Reg. Planning Comm.	22-Jul-2010
District of Col	22-Oct-2009
FHWA	3-Sep-2008
Florida DOT	7-Jun-2010
Georgia DOT	Inquired
Ft. Meade Reg. Growth Mgmt Committee	4-Feb-2011
MdTA	12-Dec-2008

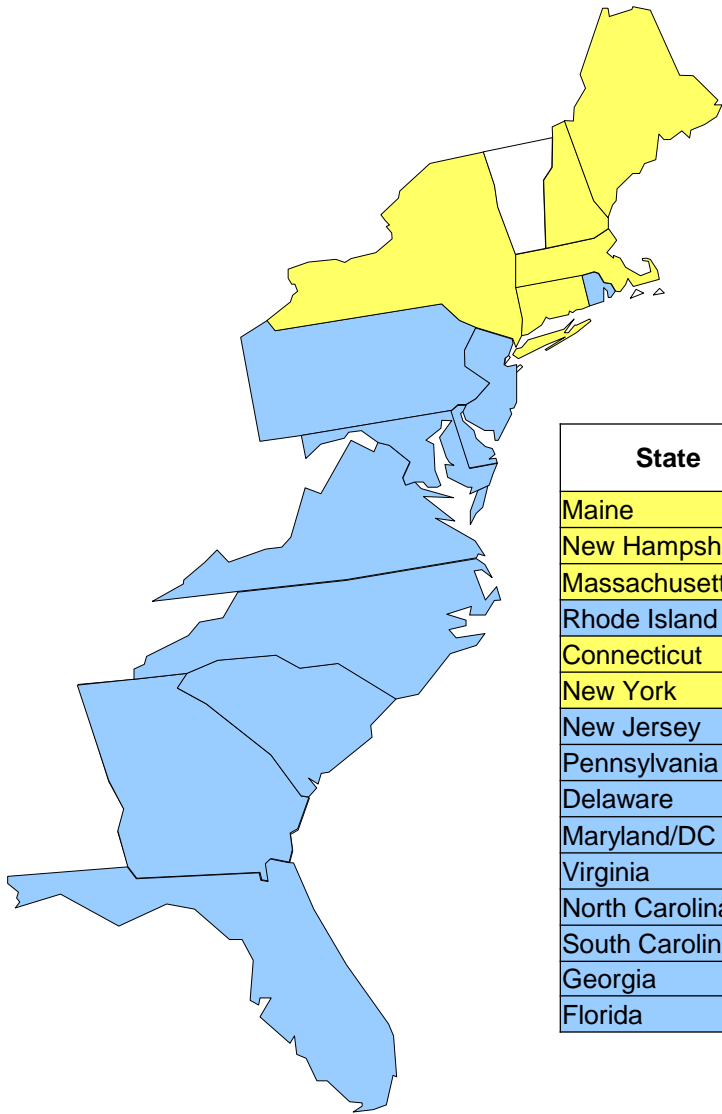
Other Coalition Members (continued)	
MTA Bridges	23-Jul-2008
MWCOG	08-Jun-2009
New Hampshire DOT	03-Feb-2010
New Jersey Transit	In process
North Jersey TPA	17-Mar-2011
NJ Turnpike	12-Jan-2009
NY State DOT	25-May-2008
Philadelphia Police	15-Jul-2010
Port Authority NJ/NY	22-Oct-2009
PRTC	26-Nov-2008
Rhode Island DOT	11-Feb-2011
Richmond, VA MPO	21-Sep-2010
Rutgers Univ. (for NJDOT)	30-Nov-2010
South Carolina DOT	22-Jan-2009
South Jersey Transp. Auth.	08-Feb-2011
Wilmington Area Planning Council	13-May-11

DUA Status (continued)

Consultants	
AECOM	20-Jul-2010
All Hazards Consortium	29-Sep-2011
CSI	12-Nov-2008
IBI Group	26-Jan-2011
IBM	11-Mar-2011
Mixon-Hill	12-Nov-2008
North Carolina State Univ/ ITRE	02-Sep-2009
Parsons Brinckerhoff	07-Apr-2011
Protronix	28-Jan-2010
Telvent	13-Feb-2009
Telvent USA	25-Jan-2011
Transurban	13-Jul-2009
Weris, Inc.	4-Oct-2011

Using Data Under Agency DUA	
Florida International University	4-Oct-2011
Virginia Mega Projects Program	11-Mar-2011

Year 19 VPP Participation Status



State	Core Miles	Expansion Miles	Funding	Status
Maine	53	N/A	N/A	
New Hampshire	16	N/A	N/A	
Massachusetts	88	N/A	N/A	
Rhode Island	78	0	Pooled Fund	Committed to Pooled Fund Study
Connecticut	111	N/A	N/A	
New York	24	N/A	N/A	Transcom is reviewing vendors
New Jersey	471.7	423.6	UMD Contract	Contract modification completed
Pennsylvania	148.7	488	State Contract	State contract mod partially complete
Delaware	46	0	Pooled Fund	Committing to Pooled Fund Study in Oct
Maryland/DC	301.1	420.1	UMD Contract	Contract completed
Virginia	309.5	198	Pooled Fund	Committed to Pooled Fund Study
North Carolina	261.8	1,291.2	UMD Contract	Contract modification completed
South Carolina	220	980	UMD Contract	Contract modification completed
Georgia	139.1	0	Pooled Fund	Committed to Pooled Fund Study
Florida	728	533	UMD Contract	Contract modification completed



States Participating in VPP for Year 19

States not participating in VPP for Year 19

USDOT's Multistate Corridor Operations and Management Program Competition

***George Schoener,
I-95 Corridor Coalition***

Solicitation Information

- Sponsored by: FHWA/USDOT
- **Multistate Corridor Operations and Management Program** (SAFETEA-LU, ITS Research program)
- Posted: October 20, 2011
- Due: December 20, 2011
- For: Existing & potential multistate organizations, coalitions, or other arrangements or entities engaged in corridor transportation activities and research

Competition Summary

- Applications for available fiscal year (FY) 2011 funding (\$7 million),
- Maximum of 80 percent of proposed program/project costs.
- Multiple awards are possible, but not guaranteed.

Coalition's Proposal

- Will build on the Coalition's successes
- Projects of regional significance that align with the Coalition's 2040 Strategic Vision
 - Could include some unfunded projects previously approved from "Year 19" and/or some new projects
- Will be reviewed & discussed with leadership of the Exec. Bd., Steering Committee & Program Track Committees.

Coalition's Commitment to VPP

- VPP Contract will remain open and available for use by member agencies through June 2014
- Coalition will continue funding of VPP at current level through June 30, 2012
- Coalition proposal under MCOM likely to include request for VPP funding through June 30, 2013

Selection of Date for Next Project Team Meeting

Thursday, December 8, 2011
10:30 AM
(proposed)

All

Questions?

- Stan Young at 301-403-4593 or seyoung@umd.edu
- Rick Schuman at 407-298-4346 or rick@inrix.com
- Karen Jehanian at 610-228-0211 or kjehanian@kmjinc.com
- For contract expansion issues Kathy Frankle at 410-414-2925 or kfrankle@umd.edu

Thank You



**I-95 CORRIDOR
COALITION**